

# Iconix One Unity Campus

3,599 sq ft (334 sq m)

READY FOR IMMEDIATE  
OCCUPATION

[www.unitycampus.co.uk](http://www.unitycampus.co.uk)

# Last Office Suite Remaining

Iconix One at Unity Campus is a two-storey modern office building with a double height glazed reception entrance and communal WC.

There is surface parking to the front and rear of the building, providing a total of 13 spaces.

The suite is open plan and benefits from air conditioning, raised floors and suspended ceilings. The suite can be available on a fully fitted basis.

## Ground Floor

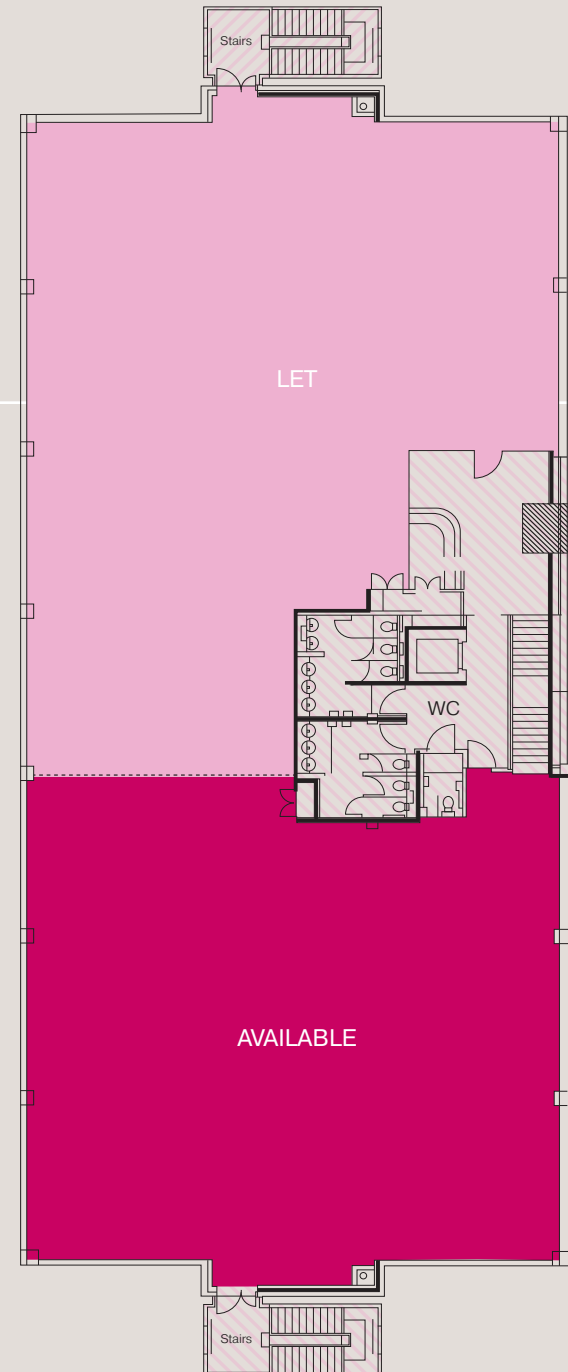
South suite - 3,599 sq ft (334 sq m)

## Floor Plan:

### Reception Area

Ground Floor Plan

- North suite
- South suite
- ▨ Communal





Comprising 3,599 sq ft (334.4 sq m)



# South Suite

## Recently Refurbished Offices

- Recently refurbished to Cat A condition
- LED lighting
- Air conditioning throughout
- Raised floors and suspended ceilings
- Secure cycle storage
- Furnished options available



# In Good Company

Whether it's breakthroughs, discoveries or everyday innovation, Unity Campus is where life science and pioneering businesses are set up to thrive. Here, pharmaceutical companies, university spinouts, R&D labs and many others work together to help solve urgent health challenges facing our world today.

## Our Current Occupiers

Cuttsy  
&Cuttsy



GETBUSY

IONTas

GRANTA Medical Practices



maxiontherapeutics



Domainex

Telensa

PHOREMOST



CHIMERIS

Sareum

WelbeckHealth  
PARTNERS

Papworth Trust

Partition  
Bio™



# Campus Location

Unity Campus is a high-specification technology and innovation park being developed by the Howard Group.

The park is in a highly accessible location on the south side of Cambridge, an area dense with research, clinical activity, innovation and life science businesses. The region is home to one of the world's leading universities and is rapidly evolving as more knowledge-driven organisations join this thriving ecosystem.

Productivity needs more than a desk or a lab. Unity Campus provides amenities that inspire, green spaces to relax and tasty lunch options. Enjoy your free time in the café, on-site gym, yoga studio or orchard. Leave the bike repairing, car valeting and postal services to us.



**7 Mins**

By Train from  
Whittlesford Parkway  
to Cambridge  
Central station

**63 Mins**

By Train from  
Whittlesford  
Parkway to London  
Liverpool Street

### By Bus

- A short bus ride via local bus services:
- 5 mins from Whittlesford Parkway to Sawston
- 7 mins from Great Shelford to Sawston

### By Bike

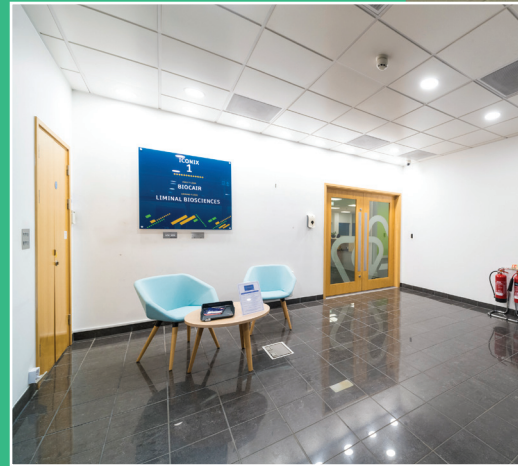
- Cycle paths all the way to Central Cambridge:
- 7 mins from Whittlesford Parkway
- 12 mins from Great Shelford
- 25 mins from Cambridge

### By Rail

- A short walk to Whittlesford Parkway Station:
- 7 mins from Whittlesford Parkway to Cambridge, around 4 trains per hour
- 1 hr 3 mins from Whittlesford Parkway to London (Liverpool Street) around 4 trains per hour

### By Road

- Immediate access onto A505 and just 1 mile from junction 10 of the M11:
- 25 mins from Cambridge to Sawston (via 1307)
- 1 hr 20 mins from central London to Sawston (via M11)



## Contact

If you are interested in discussing future occupancy requirements at Unity Campus please contact:



**Katherine Friend**

Howard Group, Director  
Investment & Asset Management

M: +44 (0) 1223 312 910

E: K.friend@howard-ventures.com



**Thomas Bewes**

Howard Group  
Asset Manager

M: +44 (0) 1223 312 910

E: T.bewes@howard-ventures.com



**Ross Hemmings**

M: +44 (0) 7890 423 803

E: Ross.hemmings@savills.com

**Liv Thomas**

M: +44 (0) 7815 032 086

E: Olivia.thomas@savills.com



**Bridget Partridge**

M: +44 (0) 7921 309 816

E: bridget.partridge@eu.jll.com

**Will Heigham**

M: +44 (0) 7860 666 355

E: will.heigham@jll.com

MISREPRESENTATION ACT 1967: Savills and JLL for themselves and for the vendor(s) or lessor(s) of this property whose agents they are, give notice that: 1. These particulars do not constitute, nor constitute any part of, an offer or contract. 2. None of the statements contained in these particulars as to the properties are to be relied on as statements or representations of fact. 3. Any intending purchaser or lessee must satisfy himself by inspection or otherwise as to the correctness of each of the statements contained in these particulars. 4. The vendor(s) and lessor(s) do not make or give and neither Savills and JLL nor any person in their employment has any authority to make or give, any representation or warranty whatever in relation to this property. Finance Act 1989: Unless otherwise stated all prices and rents are quoted exclusive of VAT. Property Misdescriptions Act 1991: These details are believed to be correct at the time of compilation but may be subject to subsequent amendment. As a responsible landlord, Howard Group has regard to the recommendations of the voluntary code for Leasing Business Premises in England & Wales 2007. If you are professionally represented, you should ask your advisor for a copy. Alternatively, the document can be found at [www.leasingbusinesspremises.co.uk](http://www.leasingbusinesspremises.co.uk). Brochure updated May 2025.